

Chimney Covers | BigTop™ Multi-Flue

FEATURES - COPPER

HY-C's Lifetime Limited Warranty

24-Gauge Removable 100% Copper Hood with Scalloped Corners and Roll-Formed Edges

24-Gauge Copper-Plated Stainless Steel Base Flanges for Extra Strength in Mounting

18-Gauge 3/4" 100% Copper Expanded Metal Mesh, Available in 9", 12" & 14" Heights

Available with Hinged Mounting Flanges

Available in Many Stock and Custom Sizes

Arrests Sparks and Reduces Certain Downdrafts



FEATURES - STAINLESS

HY-C's Lifetime Limited Warranty

24-Gauge Removable 100% 304 Stainless Steel Hood with Scalloped Corners and Roll-Formed Edges

24-Gauge 100% 304 Stainless Steel Base Flanges for Secure Mounting

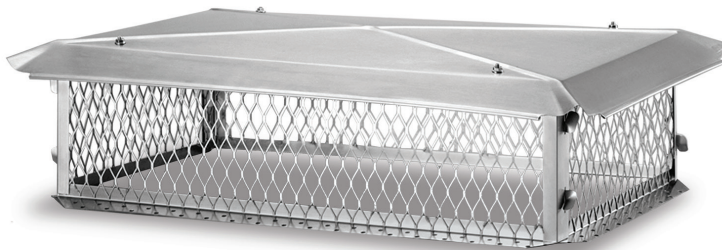
18-Gauge 3/4" 100% 304 Stainless Steel Expanded Metal Mesh, Available in 8", 10" & 14" Heights

18-Gauge 5/8" 100% 304 Stainless Steel Expanded Metal Mesh [when Required by Local Jurisdictions], Available in 8", 10" & 14" Heights

Available with Hinged Mounting Flanges

Available in Many Stock and Custom Sizes

Arrests Sparks and Reduces Certain Downdrafts



FEATURES - BLACK GALVANIZED

HY-C's 7-Year Limited Warranty

24-Gauge Removable Galvanized Steel Hood with Scalloped Corners and Roll-Formed Edges

24-Gauge Galvanized Steel Base Flanges for Secure Mounting

Attractive Black Powder Coat Paint Finish

18-Gauge 3/4" Galvanized Steel Expanded Metal Mesh, Available in 8" Height

18-Gauge 5/8" Galvanized Steel Expanded Metal Mesh [when Required by Local Jurisdictions], Available in 8" Height

Available in Many Stock and Custom Sizes

Arrests Sparks and Reduces Certain Downdrafts

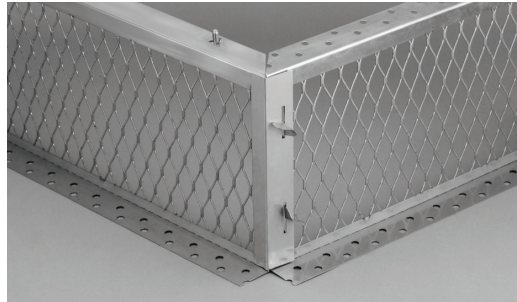
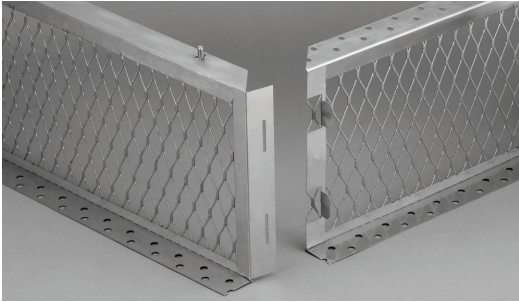


Note: In situations where Oil or Coal is burned, or when Wood or Pellets are used as the primary source of heat, do not use Aluminum or Black-Painted Galvanized Steel Covers.

Note: For Covers greater than 26" in width and/or 54" in length (screen to screen size), the lid resembles that of the Band-Around Cover - see page 10.

Install: Use a 3/16" Masonry Bit.

Chimney Covers | BigTop™ Multi-Flue



Easy to assemble with tab and slot corner design. Hood attaches to base with weld bolts and nuts; no chance of stripping out threaded holes. Hinged mounting flanges available on Stainless Steel and Copper models.

HY-C BigTop™ - Easy Solution for the Multi-Flue Chimney

The Knocked-Down (K) design is very easy to assemble on the job site, eliminating cumbersome storage of large assembled units.

STOCK NUMBER COPPER	STOCK NUMBER STAINLESS	STOCK NUMBER STAINLESS HINGED	STOCK NUMBER BLACK GALVANIZED	SCREEN-TO- SCREEN (IN INCHES)	HOOD SIZE (IN INCHES)	APPROX. LBS.
CBT1010	BT1010	BTH1010	BBT1010	10 x 10	16 x 16	8.5
CBT1014	BT1014	BTH1014	BBT1014	10 x 14	15¼ x 19¼	9
CBT1319	BT1319	BTH1319	BBT1319	13 x 19	20¼ x 25¼	11.5
CBT1414	BT1414	BTH1414	BBT1414	14 x 14	20¼ x 20¼	10
CBT1717	BT1717	BTH1717	BBT1717	17 x 17	25¼ x 25¼	13
CBT1421K	BT1421K	BTH1421K	BBT1421K	14 x 21	22¼ x 34½	15.5
CBT1426K	BT1426K	BTH1426K	BBT1426K	14 x 26	22¼ x 34½	16
CBT1430K	BT1430K	BTH1430K	BBT1430K	14 x 30	22¼ x 34½	16.5
CBT1434K	BT1434K	BTH1434K	BBT1434K	14 x 34	22¼ x 46½	19.5
CBT1537K	BT1537K	BTH1537K	BBT1537K	15 x 37	22¼ x 46½	20
CBT1729K	BT1729K	BTH1729K	BBT1729K	17 x 29	22¼ x 34½	16.5
CBT1735K	BT1735K	BTH1735K	BBT1735K	17 x 35	22¼ x 46½	19
CBT1741K	BT1741K	BTH1741K	BBT1741K	17 x 41	22¼ x 46½	21
CBT1749K	BT1749K	BTH1749K	BBT1749K	17 x 49	22¼ x 58¼	22
CBT1753K	BT1753K	BTH1753K	BBT1753K	17 x 53	22¼ x 58¼	23
CBT1758K	BT1758K	BTH1758K	BBT1758K	17 x 58	22¼ x 69¼	27
CBT1764K	BT1764K	BTH1764K	BBT1764K	17 x 64	22¼ x 69¼	29

Shipped assembled only

Stock sizes and custom sizes shipped knocked-down to minimize freight expense and to avoid shipping damage. Tube of all-weather construction adhesive cannot be shipped air freight.

CUSTOM-MADE BigTop™
Available with the following limitations:

COVER TYPE	MAX WIDTH	MAX LENGTH
Copper	40"	88"
Stainless	40"	88"
Black	40"	96"

All units ≥ 32" width, will be shipped with a minimum of 10" mesh

FEATURES

HY-C's Lifetime Limited Warranty for Copper and Stainless Steel,
HY-C's 7-Year Limited Warranty on Black Galvanized Steel

Heavy-Duty Welded Construction

24-Gauge Removable Hood for Easy Cleaning

Scalloped Corners and Roll-Formed Edges Add Style and Safety

Knocked Down BigTops are Assembled at the Factory Before Shipping to Assure the Proper Fit of All Parts

Tapmark Masonry Screws and Tube(s) of All-Weather Construction Adhesive Included

Arrests Sparks and Reduces Certain Downdrafts

Made in the U.S.A.